

CERTIFICATE OF LOCATION OF GOVERNMENT CORNER

South Quarter Corner of Section 34, Township 108 N., Range 39 W., 5th P.M.

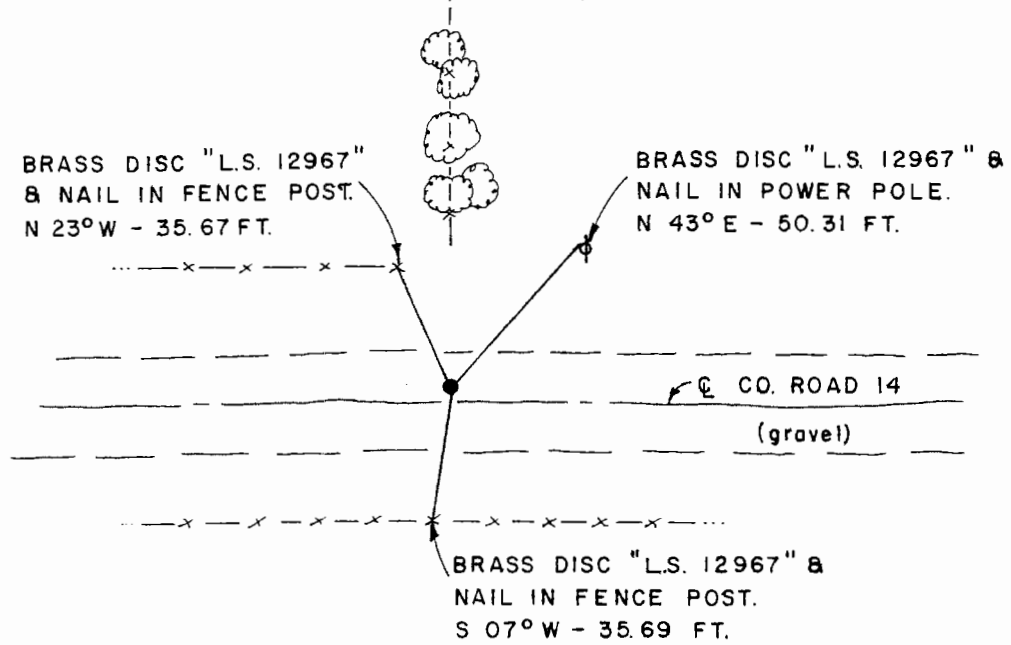
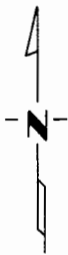
STATE OF MINNESOTA, County of Murray

At the corner location shown on the sketch:

- On Sept. 23, 1980 found a concrete monument 6" below grade; monument was 3.0'
DATE north of the C of Co. Rd. 14 & on old downed fence line to north, in tree line.
 - left monument as found, lowered monument, removed monument (explain)
- On Sept. 23, 1980 placed railroad spikes on each side of the concrete mon-
DATE ument for locating purposes.

SKETCH OF REFERENCE TIES

HOLLY TOWNSHIP
SEC. 34, T. 108 N., R. 39 W.



SEC. 3, T. 107 N., R. 39 W.
DOVRAY TOWNSHIP

I hereby certify that this document and the data contained herein was prepared by me or under my direct supervision.

[Signature]
SIGNATURE

12/28/81
DATE

Registration No. 12967

- Land Surveyor, Professional Engineer
- County Surveyor, County Engineer

OFFICE OF THE COUNTY RECORDER
County of Murray

I hereby certify that this document was filed in the Co. Recorders office at 10 A .M. on the 18th day of February A.D., 1982

County Recorder *[Signature]*

By _____, Deputy

DOCUMENT NO. _____